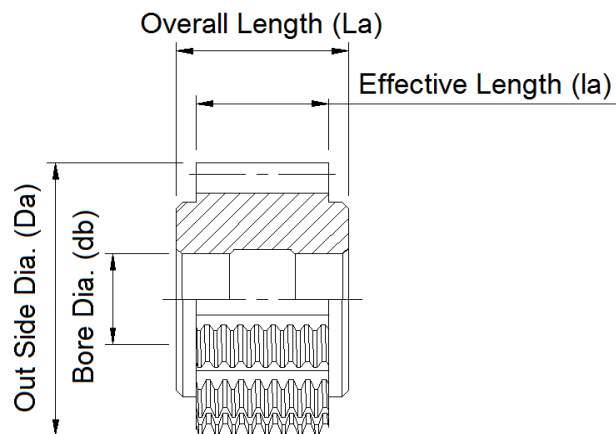




OGASAWARA PRECISION LABORATORY LTD.
STANDARD STOCK LIST

[#1] Bore ϕ 8 HSS Class A Standard Involute Hob

	Module	Pressure Angle	T/NT	Hob Size
1	m 0.15	PA 20°	T	25 X 7/8 X 8
2	m 0.2	PA 20°	T	25 X 7/8 X 8
3	m 0.25	PA 20°	T	25 X 7/8 X 8
4	m 0.3	PA 20°	T	25 X 9/10 X 8
5	m 0.4	PA 20°	T	25 X 9/10 X 8
6	m 0.5	PA 20°	T	25 X 11/12 X 8
7	m 0.5	PA 20°	NT	25 X 11/12 X 8
8	m 0.5	PA 14.5°	T	25 X 11/12 X 8
9	m 0.6	PA 20°	T	25 X 11/12 X 8
10	m 0.75	PA 20°	T	25 X 11/12 X 8
11	m 0.8	PA 20°	T	25 X 13/15 X 8
12	m 1	PA 20°	T	25 X 13/15 X 8



NOTE

*T / NT : T = Topping , NT = NonTopping

*Hob Size : Out Side Dia.(Da) X Effective Length(la) / Overall Length(La) X Bore Dia(db)

Please feel free to contact Sales & Technical Dept. for any questions.

OGASAWARA PRECISION LABORATORY LTD. Sales & Technical Dept.

3819 Yamakita , Yamakita - Machi , Ashigarakami - Gun,

Kanagawa - Pref. Japan

TEL : 81-465-75-1682

FAX : 81-465-76-3410

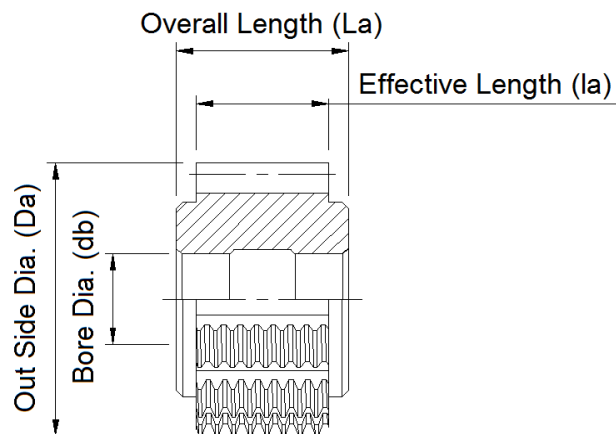
E-mail : sales@ogswr-pl.co.jp



OGASAWARA PRECISION LABORATORY LTD.
STANDARD STOCK LIST

[#2-1] Bore ϕ 10 HSS Class A Standard Involute Hob

	Module	Pressure Angle	T/NT	Hob Size
1	m 0.15	PA 20°	T	32 X 10/12 X 10
2	m 0.2	PA 20°	T	32 X 10/12 X 10
3	m 0.2	PA 20°	NT	32 X 10/12 X 10
4	m 0.25	PA 20°	T	32 X 10/12 X 10
5	m 0.25	PA 20°	NT	32 X 10/12 X 10
6	m 0.25	PA 14.5°	T	32 X 10/12 X 10
7	m 0.3	PA 20°	T	32 X 10/12 X 10
8	m 0.3	PA 20°	NT	32 X 10/12 X 10
9	m 0.35	PA 20°	T	32 X 13/15 X 10
10	m 0.35	PA 20°	NT	32 X 13/15 X 10
11	m 0.4	PA 20°	T	32 X 13/15 X 10
12	m 0.4	PA 20°	NT	32 X 13/15 X 10
13	m 0.45	PA 20°	T	32 X 13/15 X 10
14	m 0.45	PA 20°	NT	32 X 13/15 X 10
15	m 0.45	PA 14.5°	T	32 X 13/15 X 10
16	m 0.5	PA 20°	T	32 X 18/20 X 10
17	m 0.5	PA 20°	NT	32 X 18/20 X 10
18	m 0.5	PA 14.5°	T	32 X 18/20 X 10
19	m 0.5	PA 14.5°	NT	32 X 18/20 X 10



NOTE

*T / NT : T = Topping , NT = NonTopping

*Hob Size : Out Side Dia.(Da) X Effective Length(la) / Overall Length(La) X Bore Dia(db)

Please feel free to contact Sales & Technical Dept. for any questions.

OGASAWARA PRECISION LABORATORY LTD. Sales & Technical Dept.

3819 Yamakita , Yamakita - Machi , Ashigarakami - Gun,

Kanagawa - Pref. Japan

TEL : 81-465-75-1682

FAX : 81-465-76-3410

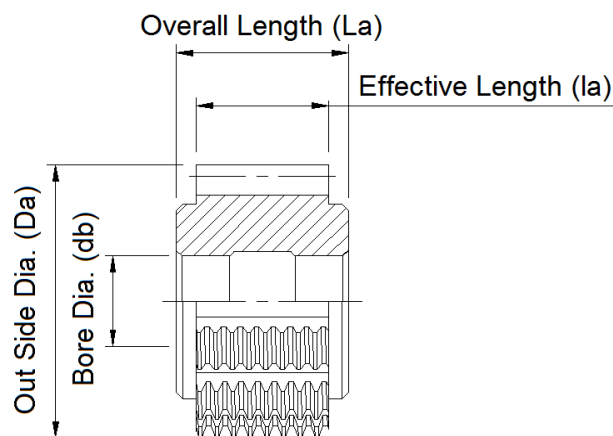
E-mail : sales@ogswr-pl.co.jp



OGASAWARA PRECISION LABORATORY LTD.
STANDARD STOCK LIST

[#2-2] Bore ϕ 10 HSS Class A Standard Involute Hob

	Module	Pressure Angle	T/NT	Hob Size
20	m 0.55	PA 20°	T	32 X 18/20 X 10
21	m 0.55	PA 20°	NT	32 X 18/20 X 10
22	m 0.6	PA 20°	T	32 X 18/20 X 10
23	m 0.6	PA 20°	NT	32 X 18/20 X 10
24	m 0.6	PA 14.5°	T	32 X 18/20 X 10
25	m 0.6	PA 14.5°	NT	32 X 18/20 X 10
26	m 0.65	PA 20°	T	32 X 18/20 X 10
27	m 0.65	PA 20°	NT	32 X 18/20 X 10
28	m 0.65	PA 14.5°	T	32 X 18/20 X 10
29	m 0.7	PA 20°	T	32 X 18/20 X 10
30	m 0.7	PA 14.5°	T	32 X 18/20 X 10
31	m 0.7	PA 14.5°	NT	32 X 18/20 X 10
32	m 0.75	PA 20°	T	32 X 18/20 X 10
33	m 0.75	PA 20°	NT	32 X 18/20 X 10
34	m 0.75	PA 14.5°	T	32 X 18/20 X 10
35	m 0.75	PA 14.5°	NT	32 X 18/20 X 10
36	m 0.8	PA 20°	T	32 X 18/20 X 10
37	m 0.8	PA 20°	NT	32 X 18/20 X 10
38	m 0.8	PA 14.5°	T	32 X 18/20 X 10
39	m 0.85	PA 20°	T	32 X 18/20 X 10



NOTE

*T / NT : T = Topping , NT = NonTopping

*Hob Size : Out Side Dia.(Da) X Effective Length(la) / Overall Length(La) X Bore Dia(db)

Please feel free to contact Sales & Technical Dept. for any questions.

OGASAWARA PRECISION LABORATORY LTD. Sales & Technical Dept.

3819 Yamakita , Yamakita - Machi , Ashigarakami - Gun,

Kanagawa - Pref. Japan

TEL : 81-465-75-1682

FAX : 81-465-76-3410

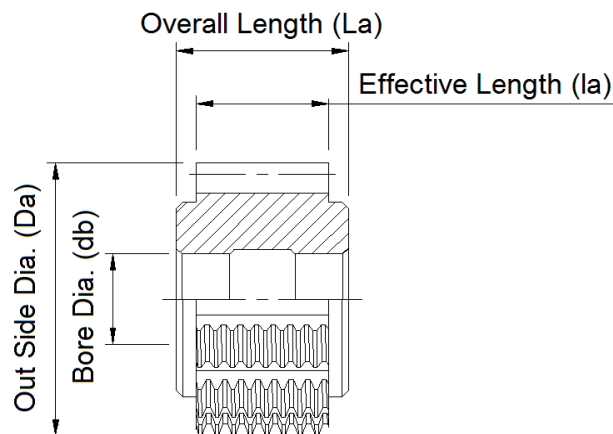
E-mail : sales@ogswr-pl.co.jp



OGASAWARA PRECISION LABORATORY LTD.
STANDARD STOCK LIST

[#2-3] Bore ϕ 10 HSS Class A Standard Involute Hob

	Module	Pressure Angle	T/NT	Hob Size
40	m 0.9	PA 20°	T	32 X 18/20 X 10
41	m 0.9	PA 20°	NT	32 X 18/20 X 10
42	m 0.9	PA 14.5°	T	32 X 18/20 X 10
43	m 1.0	PA 20°	T	32 X 18/20 X 10
44	m 1.0	PA 20°	NT	32 X 18/20 X 10
45	m 1.0	PA 14.5°	T	32 X 18/20 X 10
46	m 1.25	PA 20°	T	38 X 22/25 X 10
47	m 1.25	PA 20°	NT	38 X 22/25 X 10
48	m 1.25	PA 14.5°	NT	38 X 22/25 X 10
49	m 1.5	PA 20°	T	38 X 22/25 X 10
50	m 1.5	PA 20°	NT	38 X 22/25 X 10
51	m 1.5	PA 14.5°	T	38 X 22/25 X 10
52	m 1.5	PA 14.5°	NT	38 X 22/25 X 10
53	m 1.75	PA 20°	T	38 X 26/30 X 10
54	m 1.75	PA 20°	NT	38 X 26/30 X 10
55	m 2.0	PA 20°	T	38 X 26/30 X 10
56	m 2.0	PA 20°	NT	38 X 26/30 X 10
57	m 2.0	PA 14.5°	T	38 X 26/30 X 10
58	m 2.0	PA 14.5°	NT	38 X 26/30 X 10



NOTE

*T / NT : T = Topping , NT = NonTopping

*Hob Size : Out Side Dia.(Da) X Effective Length(la) / Overall Length(La) X Bore Dia(db)

Please feel free to contact Sales & Technical Dept. for any questions.

OGASAWARA PRECISION LABORATORY LTD. Sales & Technical Dept.

3819 Yamakita , Yamakita - Machi , Ashigarakami - Gun,

Kanagawa - Pref. Japan

TEL : 81-465-75-1682

FAX : 81-465-76-3410

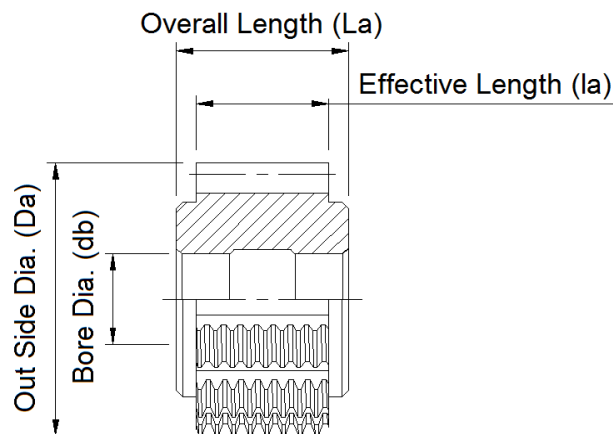
E-mail : sales@ogswr-pl.co.jp



OGASAWARA PRECISION LABORATORY LTD.
STANDARD STOCK LIST

[#3-1] Bore ϕ 10 HSS Class A Standard Involute Hob

	DP	Pressure Angle	T/NT	Hob Size
1	DP 12	PA 20°	T	38 X 26/30 X 10
2	DP 14	PA 20°	T	38 X 26/30 X 10
3	DP 14	PA 20°	NT	38 X 26/30 X 10
4	DP 16	PA 20°	T	38 X 22/25 X 10
5	DP 16	PA 20°	NT	38 X 22/25 X 10
6	DP 16	PA 14.5°	T	38 X 22/25 X 10
7	DP 16	PA 14.5°	NT	38 X 22/25 X 10
8	DP 18	PA 20°	NT	38 X 22/25 X 10
9	DP 20	PA 20°	T	38 X 22/25 X 10
10	DP 20	PA 20°	NT	38 X 22/25 X 10
11	DP 20	PA 14.5°	T	38 X 22/25 X 10
12	DP 22	PA 20°	T	32 X 18/20 X 10
13	DP 24	PA 20°	T	32 X 18/20 X 10
14	DP 24	PA 20°	NT	32 X 18/20 X 10
15	DP 24	PA 14.5°	T	32 X 18/20 X 10
16	DP 26	PA 20°	T	32 X 18/20 X 10
17	DP 26	PA 14.5°	T	32 X 18/20 X 10
18	DP 28	PA 20°	T	32 X 18/20 X 10
19	DP 28	PA 20°	NT	32 X 18/20 X 10



NOTE

*T / NT : T = Topping , NT = NonTopping

*Hob Size : Out Side Dia.(Da) X Effective Length(la) / Overall Length(La) X Bore Dia(db)

Please feel free to contact Sales & Technical Dept. for any questions.

OGASAWARA PRECISION LABORATORY LTD. Sales & Technical Dept.

3819 Yamakita , Yamakita - Machi , Ashigarakami - Gun,

Kanagawa - Pref. Japan

TEL : 81-465-75-1682

FAX : 81-465-76-3410

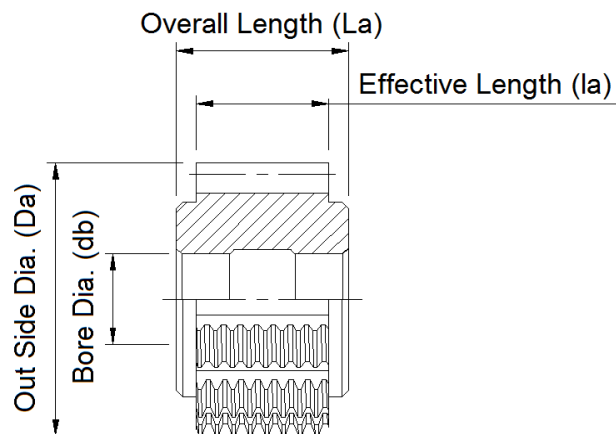
E-mail : sales@ogswr-pl.co.jp



OGASAWARA PRECISION LABORATORY LTD.
STANDARD STOCK LIST

[#3-2] Bore ϕ 10 HSS Class A Standard Involute Hob

	DP	Pressure Angle	T/NT	Hob Size
20	DP 30	PA 20°	T	32 X 18/20 X 10
21	DP 30	PA 20°	NT	32 X 18/20 X 10
22	DP 32	PA 20°	T	32 X 18/20 X 10
23	DP 32	PA 20°	NT	32 X 18/20 X 10
24	DP 32	PA 14.5°	T	32 X 18/20 X 10
25	DP 32	PA 14.5°	NT	32 X 18/20 X 10
26	DP 36	PA 20°	T	32 X 18/20 X 10
27	DP 36	PA 20°	NT	32 X 18/20 X 10
28	DP 40	PA 20°	T	32 X 18/20 X 10
29	DP 40	PA 20°	NT	32 X 18/20 X 10
30	DP 48	PA 20°	T	32 X 18/20 X 10
31	DP 48	PA 20°	NT	32 X 18/20 X 10
32	DP 64	PA 20°	T	32 X 13/15 X 10
33	DP 72	PA 20°	T	32 X 13/15 X 10
34	DP 80	PA 20°	T	32 X 10/12 X 10
35	DP 96	PA 20°	T	32 X 10/12 X 10
36	DP 120	PA 20°	T	32 X 10/12 X 10



NOTE

*T / NT : T = Topping , NT = NonTopping

*Hob Size : Out Side Dia.(Da) X Effective Length(la) / Overall Length(La) X Bore Dia(db)

Please feel free to contact Sales & Technical Dept. for any questions.

OGASAWARA PRECISION LABORATORY LTD. Sales & Technical Dept.

3819 Yamakita , Yamakita - Machi , Ashigarakami - Gun,

Kanagawa - Pref. Japan

TEL : 81-465-75-1682

FAX : 81-465-76-3410

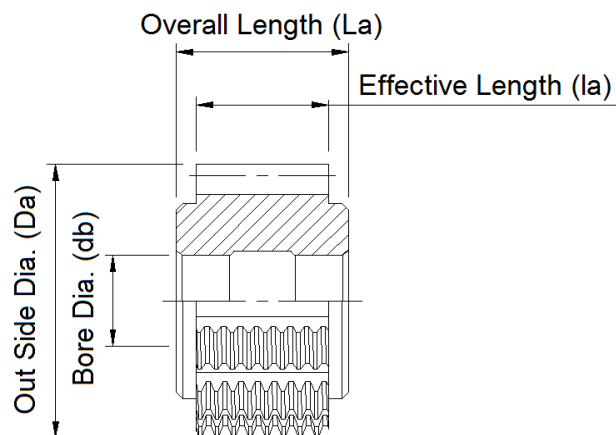
E-mail : sales@ogswr-pl.co.jp



OGASAWARA PRECISION LABORATORY LTD.
STANDARD STOCK LIST

[#4] Bore ϕ 13 HSS Class A Standard Involute Hob

	Module	Pressure Angle	T/NT	Hob Size
1	MP 0.5	PA 20°	T	32 X 37/43 X 13
2	MP 0.55	PA 20°	T	32 X 37/43 X 13
3	MP 0.6	PA 20°	T	32 X 37/43 X 13
4	MP 0.7	PA 20°	T	32 X 37/43 X 13
5	MP 0.75	PA 20°	T	32 X 37/43 X 13
6	MP 0.8	PA 20°	T	32 X 37/43 X 13
7	MP 0.9	PA 20°	T	32 X 37/43 X 13
8	MP 0.9	PA 20°	NT	32 X 37/43 X 13
9	MP 1	PA 20°	T	32 X 37/43 X 13
10	MP 1	PA 20°	NT	32 X 37/43 X 13
11	MP 1.25	PA 20°	T	38 X 37/43 X 13
12	MP 1.25	PA 20°	NT	38 X 37/43 X 13
13	MP 1.5	PA 20°	T	38 X 37/43 X 13
14	MP 1.5	PA 20°	NT	38 X 37/43 X 13
15	MP 1.75	PA 20°	T	38 X 37/43 X 13
16	MP 1.75	PA 20°	NT	38 X 37/43 X 13
17	MP 2	PA 20°	T	38 X 37/43 X 13
18	MP 2	PA 20°	NT	38 X 37/43 X 13



NOTE

*T / NT : T = Topping , NT = NonTopping

*Hob Size : Out Side Dia.(D_a) X Effective Length(l_a) / Overall Length(L_a) X Bore Dia(d_b)

Please feel free to contact Sales & Technical Dept. for any questions.

OGASAWARA PRECISION LABORATORY LTD. Sales & Technical Dept.
3819 Yamakita , Yamakita - Machi , Ashigarakami - Gun,
Kanagawa - Pref. Japan
TEL : 81-465-75-1682
FAX : 81-465-76-3410
E-mail : sales@ogswr-pl.co.jp